

STACK RADIOS



TY96 AND TY97 VHF RADIOS

The Trig stack radio has defined a new standard in design and is packed with pilot friendly features. The radio provides crisp and clear stereo communication, faster tuning, a user friendly programmable USB database, dual watch and Trig's popular 'Say Again' feature.

Combining great quality and performance each radio is housed within a superbly engineered unit, slimline and light. At only 33mm high (1.3") the radio saves valuable stack space, but retains innovative and practical features. Trig's stack radios are designed for general and light-sport aviation, with features that both experienced and novice pilots really appreciate.

Available in 8.33 and 760 only channel versions, order your Trig radio via your nearest Approved Trig Dealer now.

Fit Trig and start enjoying improved communications on every flight you make!

FEATURES

- Slimline – only 33mm high
- Bright, clear display / simple user interface
- Unique 'Push Step' for faster tuning
- Dual Watch – monitor two frequencies at the same time
- ETSO and TSO approved
- Stereo music / two place intercom
- 'Say Again' feature – allows playback of last transmission
- Emergency button
- Configurable airfield database – holds over 200 frequencies
- USB port on fascia – upload frequency database (CSV file)
- Highly efficient – no cooling fans or external cooling required
- Ideal retro-fit for legacy radios – same height as an SL40
- Unbeatable quality – designed and manufactured in the U.K.
- Two year worldwide warranty

EASY TO USE

The stack radio display is clear and bright, showing both primary and secondary frequencies along with ICAO or custom set airfield identifiers. A 'Push Step' knob allows the fastest change from 8.33 kHz to 25 kHz (TY96/TY97) or 25 kHz to 50 kHz (TY96A/TY97A) - so you can tune the radio quickly without compromising your look-out.

The Dual Watch feature allows two frequencies to be monitored at the same time – it's like having two radios in one.

The user configurable database, allows over 200 frequencies and identifiers to be downloaded to the radio from a CSV file – using the USB stick (provided). There are no subscription fees and this provides a highly flexible way to customise the radio for every flight by every pilot – perfect for fleet or club aircraft. Create your database [here](#).

SAY AGAIN

The radio has a 'Say Again' feature. A single button press replays the last radio transmission. This feature is ideal for student pilots, but every pilot can get distracted, so it avoids the embarrassment of asking air traffic to repeat a message. A one touch Emergency Button automatically sets 121.5 MHz, along with volume levels. This ensures a successful transmission in what can be a stressful situation.

INTERCOM

Each radio has a built in two place intercom with auxiliary inputs for stereo music and audio warnings. Each radio can also integrate with a GPS navigator (SL40 and GTR225 protocol) to automatically display frequencies as they are required along the flight route. Finally, an airfield database can be loaded via the handy USB port. This database can contain over 200 of your preferred frequencies and identifiers.

PRODUCT DESIGN

The radio's low profile design requires no external cooling fans. The radios compact size and features make it a great choice for both forward and retro-fit installations. Each radio is designed to easily integrate with legacy radios, these include popular KY 196A, KY 197A and SL 40 models.

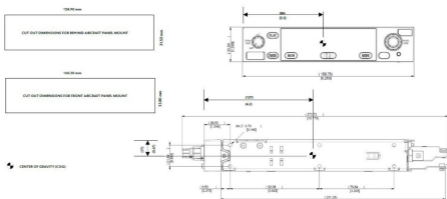
VERSIONS

Product / Model	8.33 kHz Capable (required in Europe)	760 Channel Radio (outside of Europe)	Nominal Power Output	Supply Voltage	Sales Part Number
TY96 radio	Yes	No	10W	11-33V	01227-00-01
TY97 radio – high power	Yes	No	16W	22-33V	01229-00-01
TY96A radio	No	Yes	10W	11-33V	01788-00-01
TY97A radio – high power	No	Yes	16W	22-33V	01790-00-01

SPECIFICATION

Specification	TY96 / TY96A Radios	TY97 / TY97A Radios
Type	Certified	
Certification	ETSO 2C128, 2C169a TSO-C128a TSO-C169a	
Compliance	ED-23C, ED-67, DO-186B, DO-178B Level B, DO-160G, DO-254 Level C	
Supply voltage (DC)	11 – 33 V	22 – 33 V
Typical consumption (at 14v)	(at 14V) receive: 175 mA transmit: 2A	(at 28V) receive: 250 mA transmit: 2.5A
Nominal Transmitter Power	10 Watt	16 Watt
Operating temperature	-20°C to +55°C	
Cooling requirement	no fan required	
Weight	0.95 kg / 2.09 lbs	
Dimensions (mm)	33 x W 159 x L 270 mm	
Installed depth in tray (mm)	230 mm long	
Dimensions (inches)	H 1.3" x W 6.26" x L 10.63"	
Installed depth in tray (inches)	9.05" long	

12. Installation Drawings



Dimensions in (–) are millimetres, dimensions in [–] are inches.