

STACK NAV/COM



TX56 AND TX57 NAV/COM

This is a preview of the Nav/Com – this product is subject to an extended delay, it will not be available until further notice.

Trig's TX56 and TX57 Nav/Com units provide the ideal platform to update legacy avionics or equip your new aircraft. Slimline and highly efficient both Nav/Com models are housed within a superbly engineered case. At only 33mm high each unit saves valuable space yet contains an impressive selection of practical features for any pilot.

You might be a VFR pilot wanting VOR navigational back up, a flight school seeking an easy to use training platform or a serious VFR/IFR operator looking for reliable digital capabilities. Trig's 'better by design' approach has created a Nav/Com that meets all these requirements – it will enhance your navigation and communication throughout all phases of flight.

The TX56 family of products will be available with 8.33 kHz channel spacing or conventional 25 kHz spacing, with 10 Watt or 16 Watt transmit power. The TX56A and TX57A are 760 channel radio versions (non 8.33 kHz for use outside Europe).

FEATURES

- Slimline – only 33mm high
- Bright, clear display / simple user interface
- Unique 'Push Step' for faster tuning
- Dual Watch – monitor two com or two nav frequencies at the same time
- ETSO and TSO approval (pending)
- Stereo music / two place intercom
- 'Say Again' feature – allows playback of last transmission
- USB port on fascia – upload over 200 com and nav frequency database (CSV file)
- VOR/ILS receiver – monitor a 2nd VOR
- Built in VOR/LOC converter
- Built in digital CDI
- Built in 40 channel glideslope receiver
- Highly efficient – no cooling fans or external cooling required
- Ideal retro-fit for legacy radios – unit is same height as an SL30
- Unbeatable quality – designed and manufactured in the U.K.
- Two year worldwide warranty

PUSH STEP

The Nav/Com display is clear and bright, showing both primary and secondary frequencies along with airfield / VOR identifiers. A 'Push Step' knob allows the fastest change from 8.33 kHz to 25 kHz (TX56/TX57) or 25 kHz to 50 kHz (TX56A/TX57A)- so you can tune the Nav/Com quickly without compromising your look-out. Dual Watch feature allows you to monitor two Com or Nav frequencies at the same time – it's like having a second radio.

SAY AGAIN

The radio has a 'Say Again' feature. A single button press replays the last radio transmission. This feature is ideal for student pilots, but every pilot can get distracted, so it avoids the embarrassment of asking air traffic to repeat a message.

VOR

The Nav receiver is optimised to provide stress free operation. Both the TX56 and TX57 will decode Morse, identifying VORs or ILS. The Nav receiver can monitor a second VOR which significantly enhances route navigation. This means that a standby VOR radial can be displayed in addition to the primary VOR – allowing the pilot to quickly calculate an accurate position fix.

BUILT IN CDI

The unit display features a graphical CDI (course deviation indicator) This allows the pilot to navigate without an external CDI. The TX56 also provides support for various display options, using a range of external cockpit instruments.

Once tuned the Nav receiver can identify the station by de-coding its Morse identifier, automatically identifying the selected VOR. Automatic centering of the CDI needle displays a direct bearing to a selected VOR for ease of navigation whilst the to/from button allows you to display the inbound or outbound radial.

PRODUCT DESIGN

The Nav/Com's low profile design requires no external cooling fans. The compact size and features make it a great choice for both forward and retro-fit installations. Each Nav/Com is designed to easily integrate with legacy products, these include the popular SL30 which is the same height as a TX56. Customers replacing legacy KX155 and KX165 models will easily accommodate a TX56 in their stack, in all cases a TX56 tray will need to be fitted.

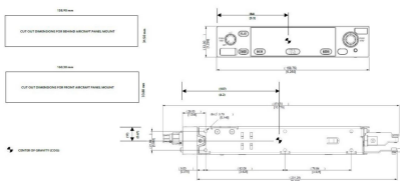
VERSIONS

Product / Model	8.33 kHz Capable (required in Europe)	760 Channel Spacing (outside of Europe)	Nominal Power Output	Supply Voltage
TX56 Nav/Com	Yes	No	10W	11-33V
TX57 Nav/Com – high power	Yes	No	16W	22-33V
TX56A Nav/Com	No	Yes	10W	11-33V
TX57A Nav/Com – high power	No	Yes	16W	22-33V

SPECIFICATION

Specification	TX56 / TX56A Nav/Com	TX57 / TX57A Nav/Com
Type	Certified	
Certification	ETSO 2C12B, 2C169a, 2C34f, ETSO 2C36f, 2C40c TSO-C12Ba TSO-C169a, C34e, TSO-C36e, C40c	
Compliance	ED-23C, ED-67, DO-186B, DO-178B Level B, DO-160G, DO-254 Level C	
Supply voltage (DC)	11 – 33 V	22 – 33 V
Typical consumption (at 14V)	(at 14V) receive: 265 mA transmit: 2A	(at 28V) receive: 140 mA transmit: 2.5A
Nominal Transmitter Power	10 Watt	16 Watt
Operating temperature	-20°C to +55°C	
Cooling requirement	no fan required	
Weight	1.1 kg / 2.42 lbs	
Dimensions (mm)	33 x W 159 x L 270 mm	
Installed depth in tray (mm)	230 mm long	
Dimensions (inches)	H 1.3" x W 6.26" x L 10.63"	
Installed depth in tray (inches)	9.05" long	

12. Installation Drawings



Dimensions in (–) are millimetres, dimensions in [–] are inches.